

# Reveal for Liver Disease

Reveal liver disease risks hiding in plain sight



## AI-enabled liver disease risk stratification designed to improve patient outcomes

In clinical settings, 85% of MASH and MASLD cases go undiagnosed. Providers face several challenges:

- The disease progresses slowly so it can be left untreated until advanced symptoms are present.
- Existing diagnostic methods are resource intensive.
- EHR limitations hinder accurate auto-calculation of FIB-4/NFS, affecting diagnostic effectiveness.

Imagine having new tools to support early MASH/MASLD diagnosis and accelerate treatment.

With Reveal for Liver Disease, you can use your existing EHR data to identify patients at higher apparent risk for MASH. Leveraging an advanced AI model, Reveal accurately flags patients who are statistically more likely to be diagnosed with MASH, facilitating timely intervention. Early engagement not only improves patient outcomes but also reduces overall treatment costs.

## Reveal for Liver Disease difference

- Uses existing EHR data and an advanced AI model to flag patients who have higher statistical risk for MASH
- Risk stratifies patients and enables targeting for earlier diagnosis and treatment
- Valid even without complete data for FIB-4 calculation

**25% of U.S. adults** have MASH/MASLD.<sup>1</sup>

## Why Reveal for Liver Disease?

### Timely diagnosis and treatment

Reveal for Liver Disease accelerates treatment, reducing the over 4 years of life lost from MASH/MASLD.<sup>2</sup>

### Improve patient outcomes

The 5-year survival rate for MASH is 59% when diagnosed early, as opposed to 15% when diagnosed at a later stage.<sup>3</sup>

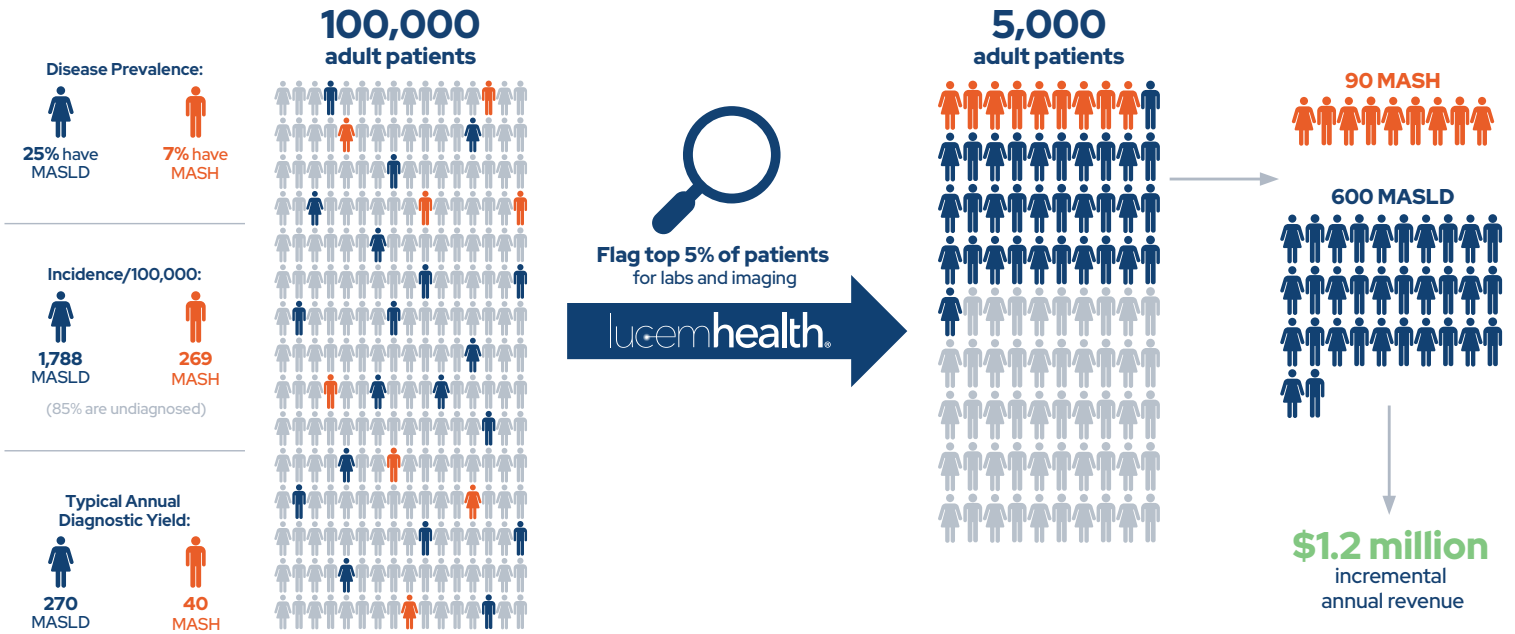
### Significantly enhance clinical yield

With Reveal, provider organizations are projected to improve MASH diagnosis by up to 300% compared to standard clinical screening.

### Capture missed revenue

Capture \$2,200 for each MASLD and \$6,000 for each MASH case identified.

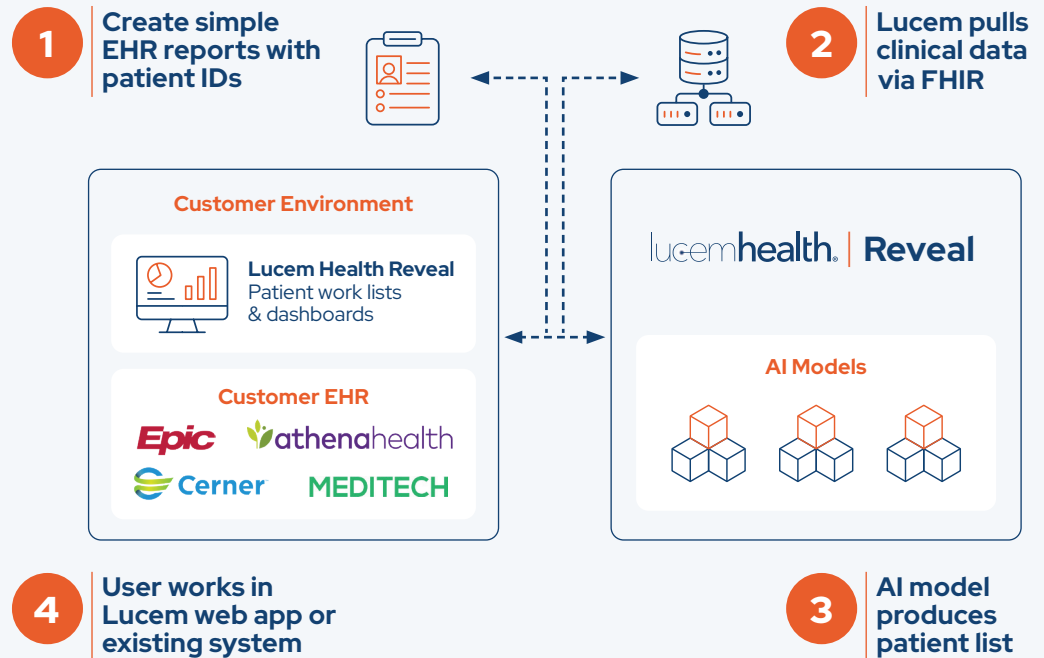
## Real return from targeted screening



## A proven solution built by Lucem Health

Reveal for Liver Disease is powered by Lucem Health's proprietary patient identification and risk stratification model.

The underlying model for Reveal for Liver Disease was developed and trained using real-world clinical data commonly found in provider datasets.



## Additional Reveal solutions for greater impact

In addition to predicting liver disease risk, Lucem Health Reveal solutions target lower GI disorders, lung cancer, stroke, prediabetes progression, and undiagnosed diabetes.

All Reveal solutions deploy on Lucem Health's proactive care platform, making it simple for healthcare providers to broadly assess patient risks across the communities they serve.

## A novel, zero cost program for early detection of Liver Disease

Lucem Health invites select health systems to participate in a sponsored program for early detection of liver disease. Program participants get all the clinical and financial benefits of Reveal for Liver Disease at no cost.

### Program scope

**Early Detection:** Deploy Lucem Health's Reveal for Liver Disease solution to identify patients with an increased risk of undiagnosed MASLD and MASH.

**Disease Insights:** Enable access to summarized de-identified patient data to survey the pre-diagnosis and post-diagnosis treatment pathways for MASLD, MASH, and Cirrhosis.

### Key details

**Engagement length:** Production deployment of Reveal for Liver Disease and related data analysis for up to 12 months:

- **Month 1:** Background data calibration
- **Months 2-4:** Production use of Reveal for Liver Disease and Disease Insights (minimum deployment commitment)
- **Months 5-13 (optional):** Optional, continued use of Reveal for Liver Disease for an additional 9 months (12 total months of production solution use).

**Disease insights:** Production deployment of Disease Insights dashboards that highlight pre-diagnosis evaluation and post-diagnosis treatment pathways for patients with MASLD, MASH and Cirrhosis. Lucem will optimize dashboards for the health system and the program sponsor.

**Cost:** Program participants get all of the benefits of Reveal and Disease Insights for up to 12 months at no cost.

### The fine print

- **Timely implementation:** Participants agree to complete implementation activities within a 2-month timeframe.
- **Data sharing:** Participants agree to let Lucem use their aggregated, de-identified patient data (related to pre-diagnosis evaluation pathways, post-diagnosis treatment pathways, and patient outcomes) to power Disease Insights application dashboards.
- **FHIR integration:** The health system will facilitate data integration using USCDI and industry standard FHIR resources.
- **Security:** Lucem will complete standard security assessments, and health system users will authenticate via single sign on (SSO).
- **Patient engagement:** Appropriate team members at participating health systems will contact flagged patients to schedule office visit.
- **Clinical capacity:** Program participants have available clinical capacity and will prioritize evaluation of Reveal-flagged patients.

## How it works

### Integration and deployments

Lucem Health integrates with participant's EHR using standard FHIR interoperability resources.



### AI-enabled patient flagging

Reveal for Liver Disease uses existing patient EHR data for specific patient cohorts to identify patients at higher apparent risk for undiagnosed MASLD and MASH.



### Care team outreach

Provider care teams engage patients for follow-up office visits as part of their existing clinical workflows.



### Data analysis

Lucem uses de-identified data on subject cohorts, flagged patients, and follow-up activities to gain insights into pre-diagnosis health history and post-diagnosis treatment pathways.

## Timeline overview

Phase	Expected Time
1. Program Kick Off & Planning	1 month
2. Integration & Deployment (see below for additional detail)	2 months
3. Solution Calibration	1 month
4. Production Solution Use	Up to 12 months: <ul style="list-style-type: none"> <li>• 3 months production use (required)</li> <li>• 9 months additional production use (optional)</li> </ul>

## Health system team members

Resource Type	Estimated Duration	Estimated Task Time (Hrs)	Implementation Comments
IT Infrastructure/ Security/Access	2-4 weeks	3-5	Discovery/requirements, approvals, setup, and testing
Interfaces (e.g. FHIR connectivity)	2-4 weeks	4	Discovery/requirements, setup, and testing
Clinical Sponsor	Program duration	40	Patient cohort definition and ongoing meetings
Project Manager	4-8 weeks	20	Kick-off through Go Live
Report Writer	1-2 weeks	2-3	Patient cohort requirements review, EHR report writing, review, and validation
Clinical Workflow SMEs	2-3 weeks	3-5	2-3 workflow design sessions, testing, and user training
EHR SMEs	As needed	2	May be needed for certain implementation topics

Lucem Health is committed to supporting healthcare providers in improving outcomes for patients with liver disease. Our program offers a novel approach for identifying and managing patients at higher apparent risk of liver disease and valuable insights that lead to improved outcomes for patients living with liver disease.

### Additional sponsored early detection and disease insights programs available

Interested in sponsored programs for other disease areas? Let us know.



Lucem Health helps healthcare providers accelerate disease detection and treatment using practical, responsible AI—so they can improve patients' lives and increase the clinical and financial yield from today's scarce care delivery resources.

**Visit [lucemhealth.com](https://lucemhealth.com)**